

TURBOWIN

FUEL CELL MICRO TURBO COMPRESSOR

INNOVATION OF TURBO TECHNOLOGY
FOR FUEL CELL INDUSTRY
BEYOND IMAGINATION

*VARIABLE HIGH SPEED
OIL-LESS AIR BEARING
WIDE POWER RANGE*



Turbowin Co., Ltd.
Turbowin Headquarters
R&D, Production and Customer Support

633 Jeongjung Village, Osong Town, Chengju City,
Chungchengkuk Province, Republic of Korea (Zip Code: 28164)

T. +82 70 - 4223 - 0799
F. +82 43 - 216 - 0799
E. info@turbowin.com
W. <http://www.turbowin.co.kr>

Turbowin Global Co., Ltd.
Subsidiary of Turbowin
Global Strategy, Sales and Marketing

402 Daechi First Building,
155 Samsung Road, Gangnam District,
Seoul Metropolitan, Republic of Korea (Zip Code: 06291)

T. +82 2 - 554 - 0799
F. +82 2 - 556 - 0799
E. info@turbowin.com
W. <http://www.turbowin.com>

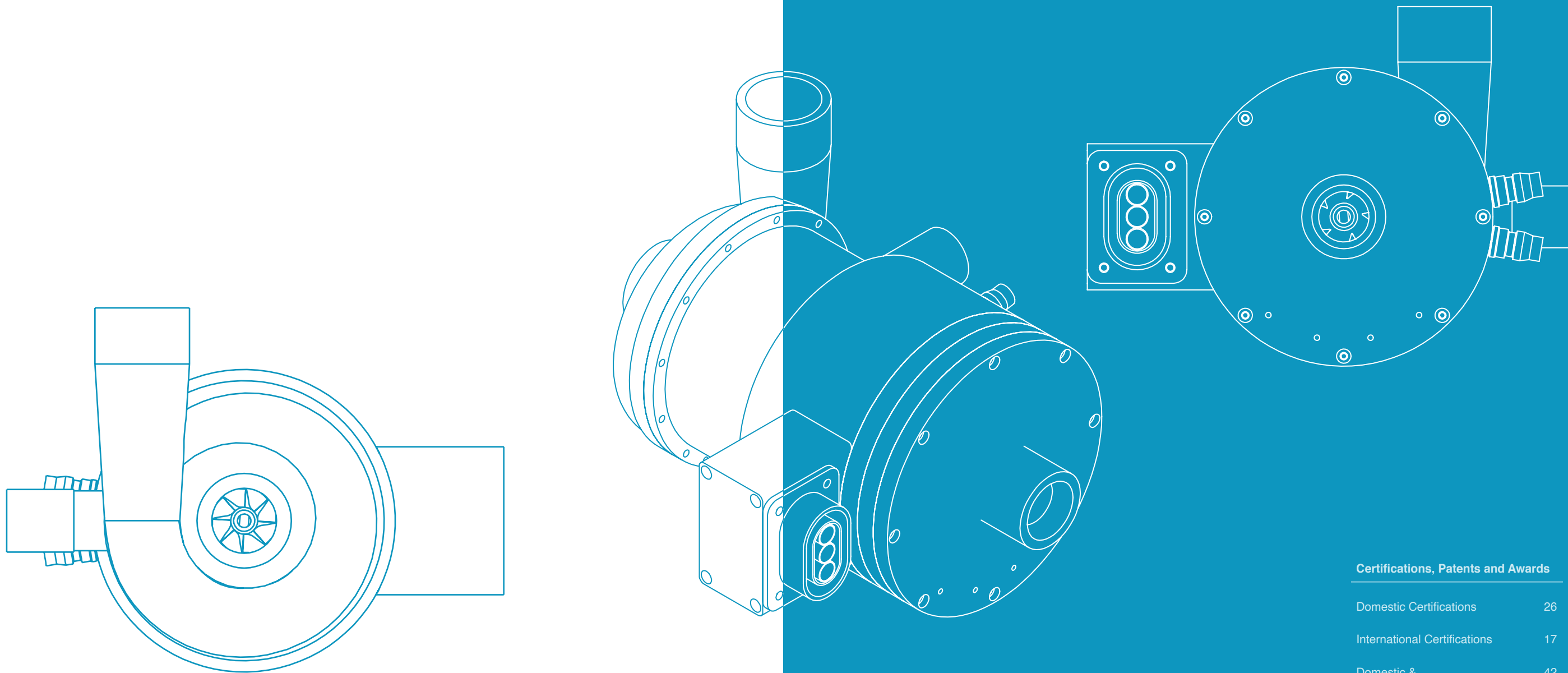


TURBOWIN

WORLD'S 1ST AIR FOIL BEARING TURBO BLOWER INVENTOR AND CERTIFIED R&D EXPERTS WILL GUARANTEE BOTH EFFICIENCY AND EFFECTIVENESS FOR FUEL CELL INDUSTRY WITH WORLD CLASS WIDE POWER RANGE AND GLOBAL TOP LEVEL QUALITY.

A group of experts who have developed and dedicated turbomachinery for more than 20 years, leads and manages Turbowin. The company is leading the next-generation environmental industry based on direct-coupled and eco-friendly turbo technology. Furthermore, our products guarantee better quality of life based on oil-less technology and high efficiency energy saving technology using air foil bearing. Turbowin provides the best solution for various industries around the world with the most diverse product portfolio.

Our turbomachines are integration of exceptional R&D experiences and ingenious patented technology. We serve more than 2 Billion people in more than 70 countries around the world.

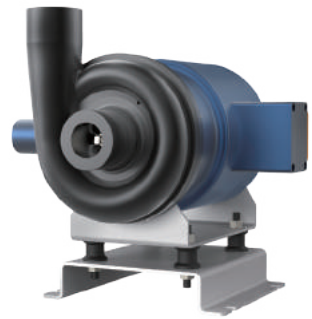


Certifications, Patents and Awards

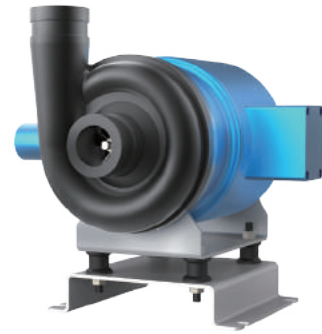
Domestic Certifications	26
International Certifications	17
Domestic & International Patents	42
Awards	10

TURBOWIN FUEL CELL MICRO TURBO COMPRESSOR

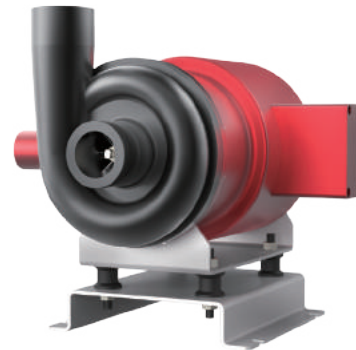
SUPPLIES OXYGEN TO THE FUEL CELL SYSTEM



WF3



WF5



WF7



WF9



WF11

WIDE

POWER RANGE FOR DIVERSE APPLICATIONS

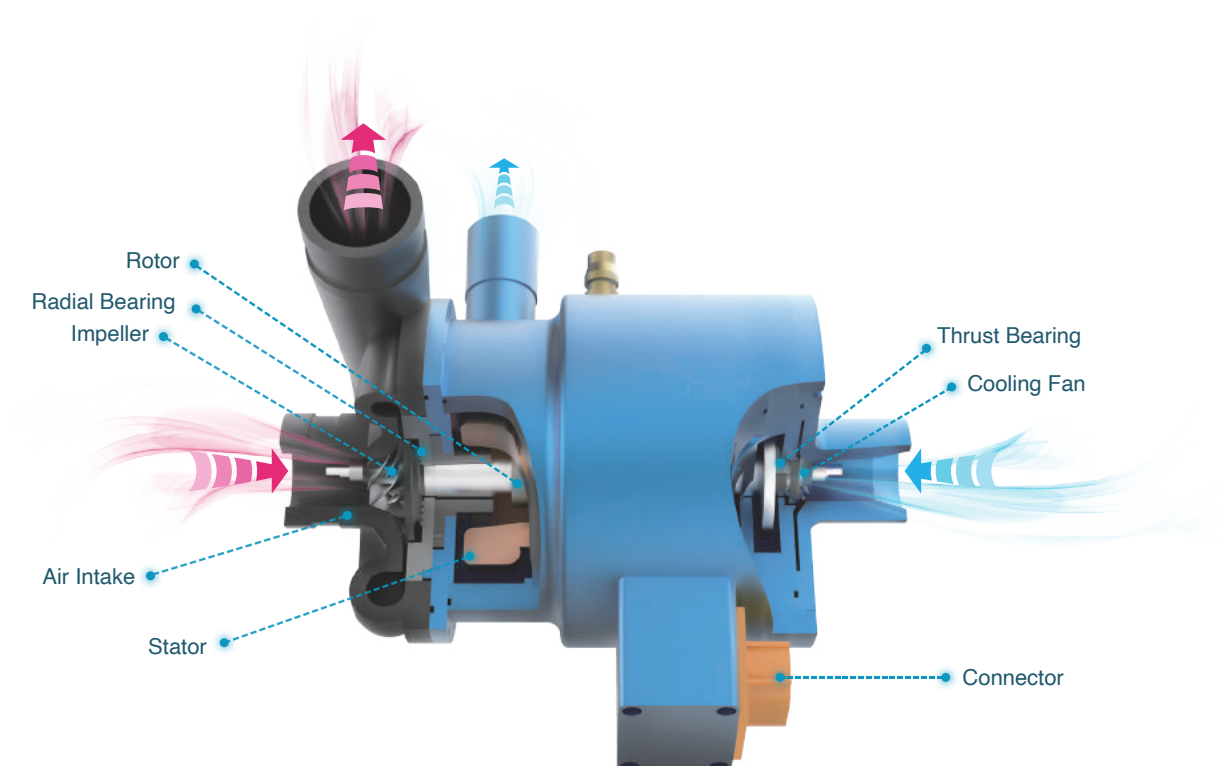
Turbowin's Fuel Cell Micro Turbo Compressor has the world's widest power range from 3KW to 11KW, so it enables to apply for intriguingly multifarious applications.

SPECIFICATION		WF3	WF5	WF7	WF9	WF11
Pressure Ratio	1.6	50	84	115	148	181
	1.8	40	66	90	116	142
	2.0	33	55	75	97	119
	2.2	28	46	64	83	101
Shaft Power (KW)		3	5	7	9	11
Rated Speed (RPM)		50,000 ~ 150,000	50,000 ~ 150,000	50,000 ~ 150,000	50,000 ~ 120,000	70,000 ~ 110,000
Voltage(VDC)		250~450 / 450~750	250~450 / 450~750	250~450 / 450~750	250~450 / 450~750	250~450 / 450~750
Structure Type		Single Stage (Water & Air cooling)				
Standard Condition		Air Flow (g/s) : 1atm, 20°C, 35%RH, Tolerance±5%				

SUPERIOR

COOLING SYSTEM EVEN IN FACING EXTREME DRIVING CONDITIONS

Turbowin's Fuel Cell Micro Turbo Compressor is equipped with outstanding cooling efficiency and strong durability regardless of its compact size based on the global patented technologies. Turbowin can guarantee sustainable durability even in extreme driving conditions.



OVERWHELMING

HIGH FUEL EFFICIENCY FOR LONG DISTANCE DRIVING

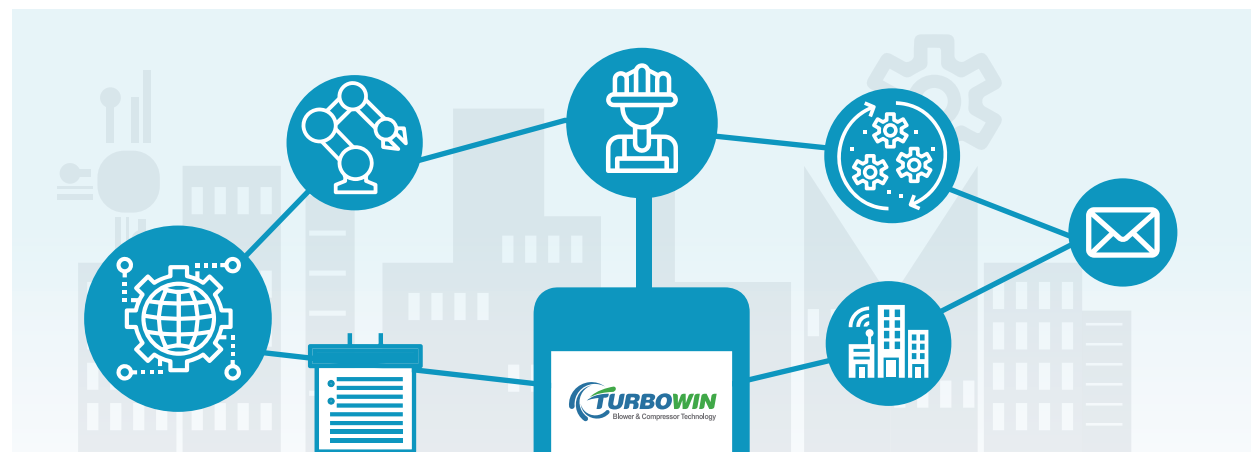
Based on Turbwin's integrated fuel cell turbo system and modular platform along with its minimized volume and weight, the convincingly economical driving could be available for long distance which is the key factor for the success of fuel cell driving system.



SMART

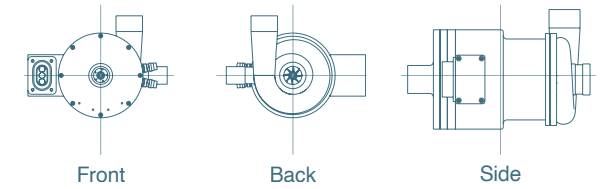
SMART NEW BIG FACTORY WHICH ENABLES ECONOMY OF SCALE WITH IoT SYSTEM

Turbwin has newly established smart factory which can produce at least more than 50,000 units per year to accomplish the economy of scale that could be very sensitive to be equipped with economic feasibility. All facilities and software in the smart factory are controlled by IoT system. Customer services are automatically controlled by the smart system as well.



WF SERIES

THE IDEAL WF SERIES PACKAGE FOR FUEL CELL SYSTEM



The Performance Map of WF Series

